



ESRI PÄEVAD 2021

Ruumiandmed paremini leitavaks **Living Atlas** abil

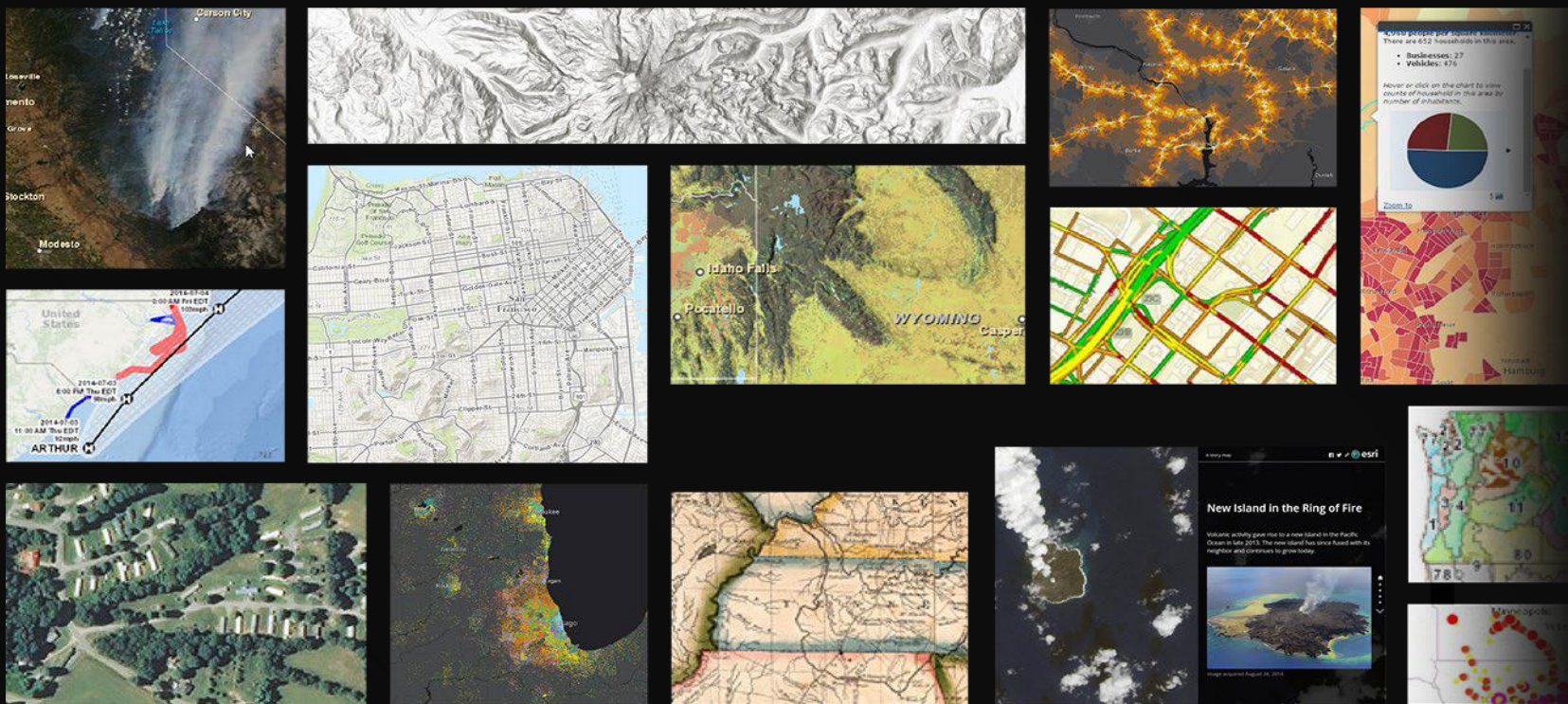
Tõnis Prangli
AlphaGIS



8. september 2021 • Original Sokos Hotel Viru
esripaevad.alphagis.ee

Living Atlas of the World

Aluskaardid, kaardikihid, rakendused, teenused ühes kohas



Trending
POI
Transportation
Environment
Observations
Landscapes
Infrastructure
Basemaps
Boundaries
Land Cover
Oceans
Historical
Imagery
Weather
People
Demographics
Places
Habitats
Business
Traffic
Movement
Hazards
Hydro
Elevation
AI6
Layers

... maailma suurim geoportaal

Living Atlase sisu

- Aluskaardid
 - Lai valik vektor- ja rasteraluskaarte
- Kaardi- ja teenuskihid
 - Teenuskihid, pildiandmed, kõrgusandmed, reaalaajas andmed
- Rakendused
 - Mobiili- ja veebirakendused, kaardilood, töölaudad
- Tööriistad
 - Reeglid, masinõpe, rasterfunktsioonid, geokodeerimine



Integreeritud ArcGIS Pro'ga, Enterprise'iga ja Online'iga

The image displays two overlapping software interfaces. On the left is the ArcGIS Pro 'Add Data' dialog box. It features a search bar with 'imagery' entered and a list of data sources including 'World Imagery', 'NAIP Imagery Metadata', 'Arctic DEM', 'Landsat GLS Multispectral', 'Landsat GLS Pansharpened', 'Cleveland aerial imagery 1951', 'Luchtfoto (RD)', 'Landsat GLS Panchromatic', 'MODIS Burn Scars and Flooding - Terra Surface Reflectance', 'MODIS Burn Scars and Flooding - A', and 'NaturalVue® 2.0'. The 'MODIS Burn Scars and Flooding - Terra Surface Reflectance' layer is selected. A preview window shows a satellite image of a forested area. The 'Name' field at the bottom contains 'MODIS Burn Scars and Flooding - Terra Surface Reflectance' and 'Default'. 'OK' and 'Cancel' buttons are visible.

On the right is the ArcGIS Online 'Map Viewer' interface. The title bar reads 'Untitled map' and 'Open in Map Viewer Classic'. The 'Add layer' dialog is open, showing a preview of the selected layer and options to 'Add to Favorites', 'Remove from Map', or 'Use as basemap'. The main map area displays a satellite view of a coastal region. The right-hand panel shows the 'World Ecophysiographic Land Units 2015' layer selected, with a 'Properties' pane showing a legend with 8 color-coded categories. The 'ArcGIS Online Labs' user profile 'bwszukalski' is visible in the top right corner.

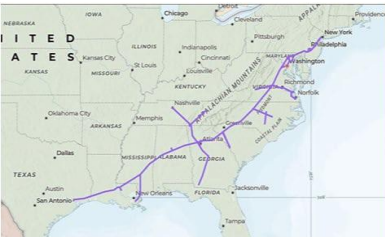
...kasutamiseks oma igapäevases töökeskkonnas

ArcGIS Living Atlas veebileht

<https://livingatlas.arcgis.com>

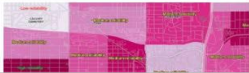
What's new

Explore items recently added to ArcGIS Living Atlas of the World, learn about GIS events, and discover ways to use content.



Map pipelines using ArcGIS Online and ArcGIS Living Atlas

ArcGIS Living Atlas of the World includes authoritative live feeds and other content that helps you learn more about current events and U.S. infrastructure. Learn to make your own pipeline map in a minute using Living Atlas content and filters to focus on the Colonial Pipeline.

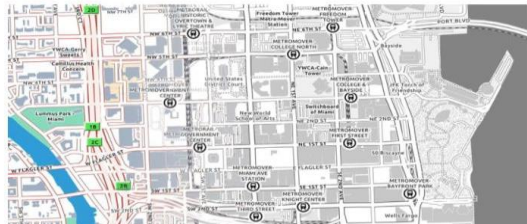


Improving the understanding of wildfire community risk

There is a lot we can do to reduce wildfire risk to homes and communities.

ArcGIS Living Atlas Articles

Search ArcGIS Blog



FEATURED ARTICLE

A Gray Accessible Basemap

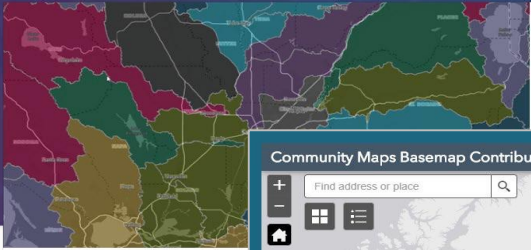
Andy Skinner | May 19, 2021

Developing a single-color accessible basemap that meets WCAG/Section 508 guidelines

[Read this article →](#)

Highlighted apps

Content from ArcGIS Living Atlas of the World is used to make stunning, valuable apps for visualization and analysis.



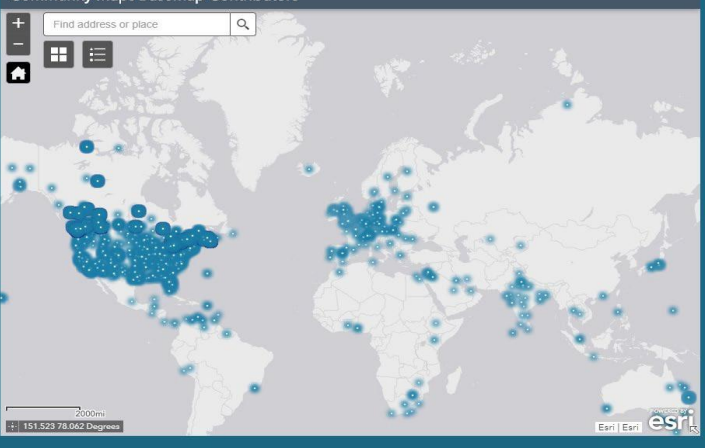
Contributor
Esri Landscape

SSURGO Downloader

Download ready-to-use project packages with SSURGO dataset.

[View application](#)

Community Maps Basemap Contributors



See who has contributed to the Community Maps Program

For a complete listing of all current contributors to the four ArcGIS Online Community Maps basemaps, use the links below:

- Contributors for the World Imagery Map
- Contributors for the World Street Map
- Contributors for the World Topographic Map
- Contributors for the Ocean Basemap



Aitäh kuulamast!

<https://livingatlas.arcgis.com>

Tõnis Prangli
Tonis.Prangli@alphagis.ee