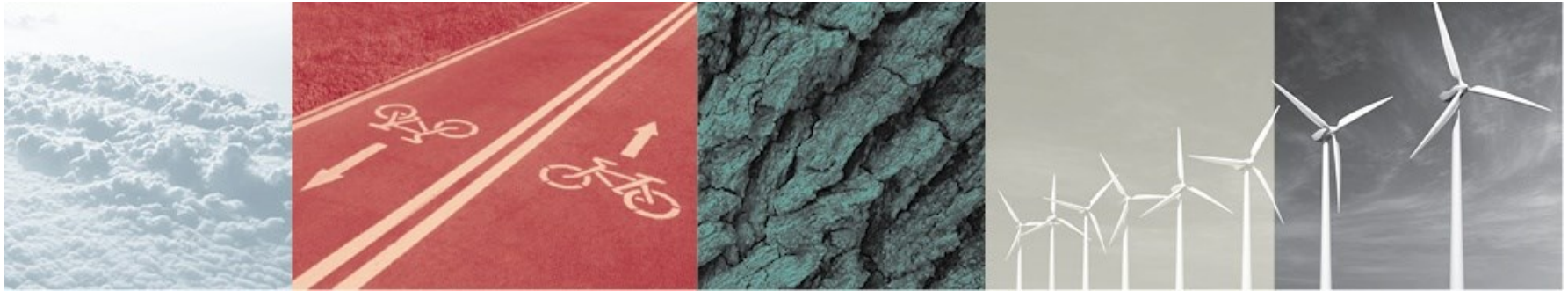


*Making Spatial Planning More  
Accessible With Web GIS*

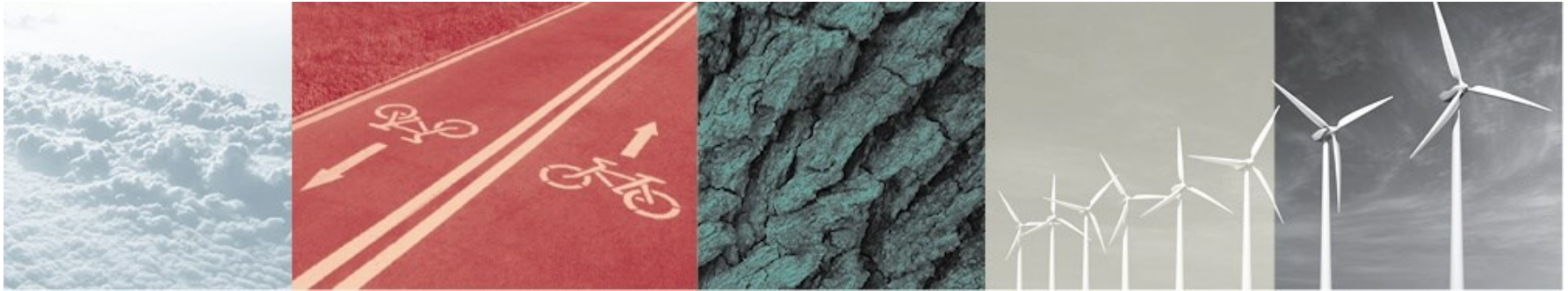
Jaanus Padrik

jaanus.padrik@hendrikson.ee



# Spatial planning and analyses at Hendrikson & Ko

- 15 ongoing comprehensive plans
- Estonian maritime spatial plan
- Site selections for windparks and other objects
- Webmap applications/3D visualizations for detailed plans



# New developments and necessities in spatial planning

- Area of an average local municipality increased by 169% since 2017
- Info-rich planning maps
- Problems with printouts and readability
- Making planning data public and easier to understand through web maps
- Web map as part of a larger planning portal = bringing all planning information together under one roof



## EXAMPLES

<https://hendrikson.ee/maps/Tartu-vald/>

<https://mereal.hendrikson.ee/>

<https://hendrikson.ee/maps/Maardu-ÜP/>

<https://hendrikson.ee/maps/Lüganuse-tuulikud/3D.html>

<https://hendrikson.ee/maps/Tingimused/>

<https://hendrikson.ee/maps/DGE/3D-sketching.html>

<https://hendrikson.ee/maps/katastristatistika.html>



Thank You for  
attention!

[jaanus.padrik@hendrikson.ee](mailto:jaanus.padrik@hendrikson.ee)

